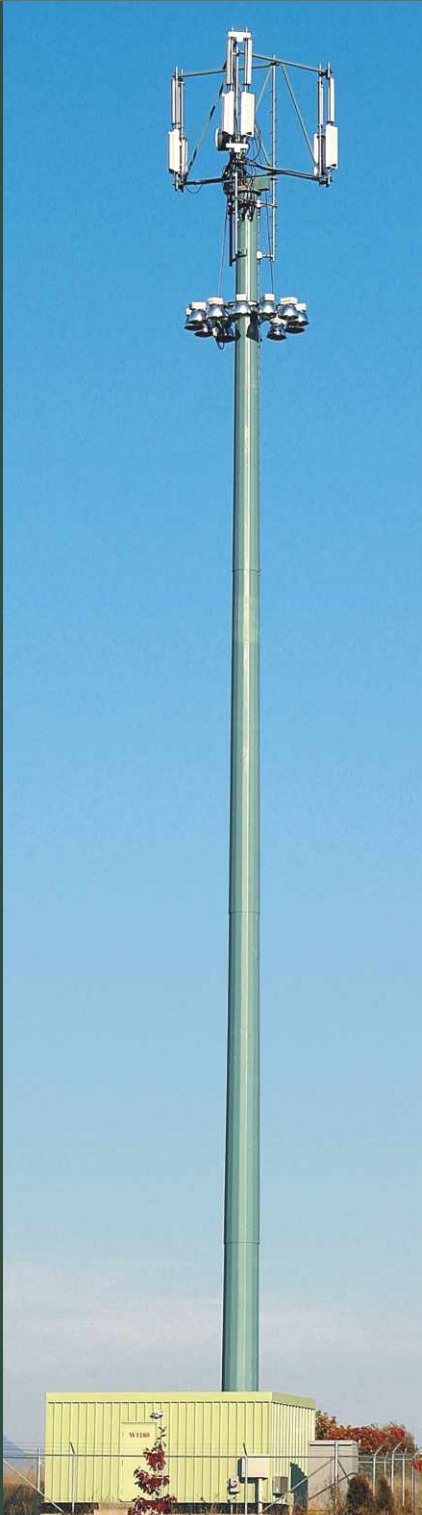




West Coast Engineering Group



HIGHMAST POLES

HIGH MAST POLE SYSTEM



AIRPORTS

BRIDGES

CONTAINER YARDS

FREIGHT TERMINALS

HIGHWAYS

INDUSTRIAL PLANTS

INTERCHANGES

MINES

PARKING LOTS

PIERS

PORTS

PRISON YARDS

RAILROAD YARDS

ROADWAYS

SHOPPING CENTERS

SPORTS COMPLEXES



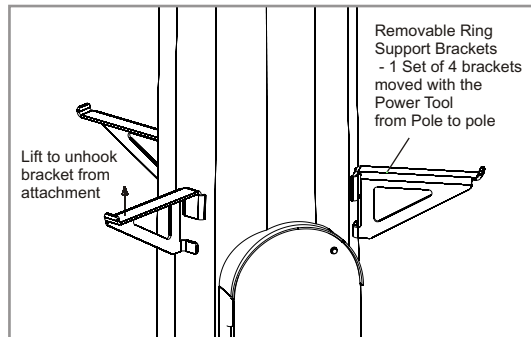
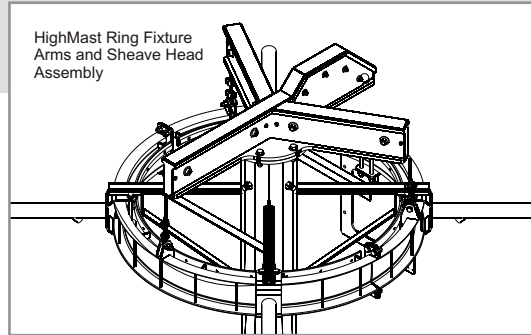
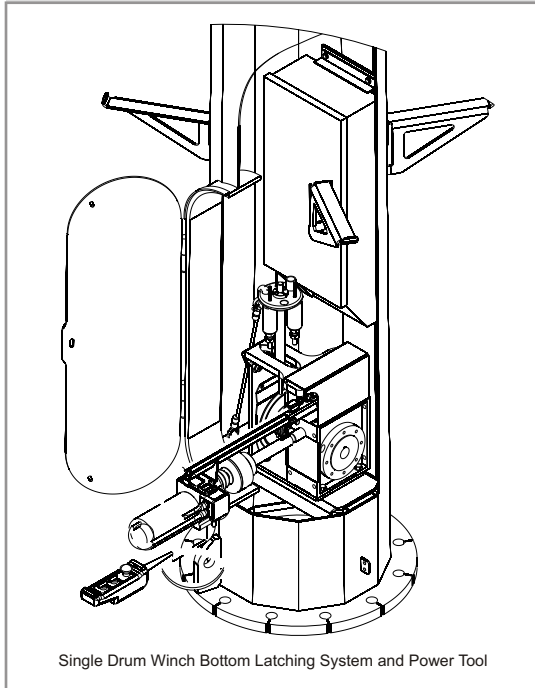
*“A design that
is miles above
the competition”*

West Coast Engineering designs, fabricates and offers a comprehensive line of high mast systems to meet the needs of our customers.

Over the past two decades, West Coast Engineering has successfully completed several hundred high mast pole installations. These include projects for the BC Ministry of Highways, Everett HOV for Washington State DOT, Port of Tacoma, Port of Vancouver, Delta Port, BC Ferry Terminals, CN Rail, Vancouver International Airport and numerous container yards.

Our highly trained and experienced staff will provide you with a superior designed product which is equipped with the most reliable lowering system available today.

We look forward to working with you in fulfilling your high mast requirements.



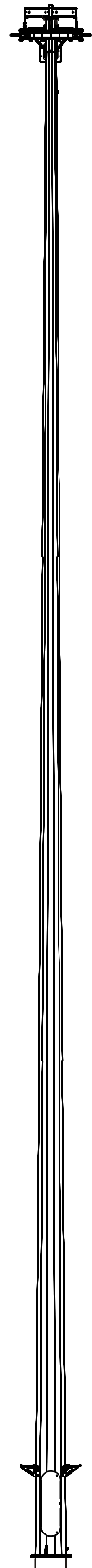
MAX. WORKING LOAD RATING:
750 KG

SAFETY FACTOR: 5 - FOR
LATCHED SYSTEM

WINCH TORQUE RATING: 170% OF
TORQUE REQUIRED AT RATED LOAD

- Cost effective single drum winch design with lubricated and sealed winch
- Grooved drum for correct winding of the wire rope
- Remotely actuated **Bottom Latching System**
- Latching system is self-closing under load
- Simplified power tool support - no need for positioning adjustment
- Easy adjustment torque limiter
- Low profile sheave head assembly with large bending radius for the electrical cable and guides for the ropes to prevent tangling

- Spring loaded stainless steel rotation resistant support cables (3 of) that self adjust for leveling the high mast ring, distribute the load evenly, keeps the ring docked against the docking bumpers and self adjust for different stretch and heat elongations and contractions of the cables.
- While the operator attaches the safety cable, there are 2 redundant systems holding the ring: the winch cable and the latching system
- After attaching the safety cable clip, tension can be released from the winch cable. The latching system is holding the load, backed up by the safety cable (and the winch cable in most of the cases - if the winch is not removed)
- The high mast ring is always supported from the transition plate up by 3 cables (1/4"). Only during raising and lowering is it supported by the single winch cable (5/16") (between the winch and transition Plate). During raising and lowering the operator must be 5-8 m away from the pole, controlling the system from the pendant station.





West Coast Engineering Group

Delta, BC:

West Coast Engineering Group Ltd.
7984 River Road,
Delta, BC V4G 1E3
Canada

Telephone: 604-946-1256

Fax: 604-946-1203

Winnipeg, MB:

West Coast Engineering Group Ltd.
1450 Saskatchewan Ave.
Winnipeg, MB R3E 0G3
Canada

Telephone: 204-987-3110

Fax: 204-775-9066

Ferndale, WA:

West Coast Engineering Group Ltd.
6823 Northgate Way
Ferndale, WA 98248
USA

Telephone: 360-366-3400

Fax: 360-366-3401



www.wceng.com

